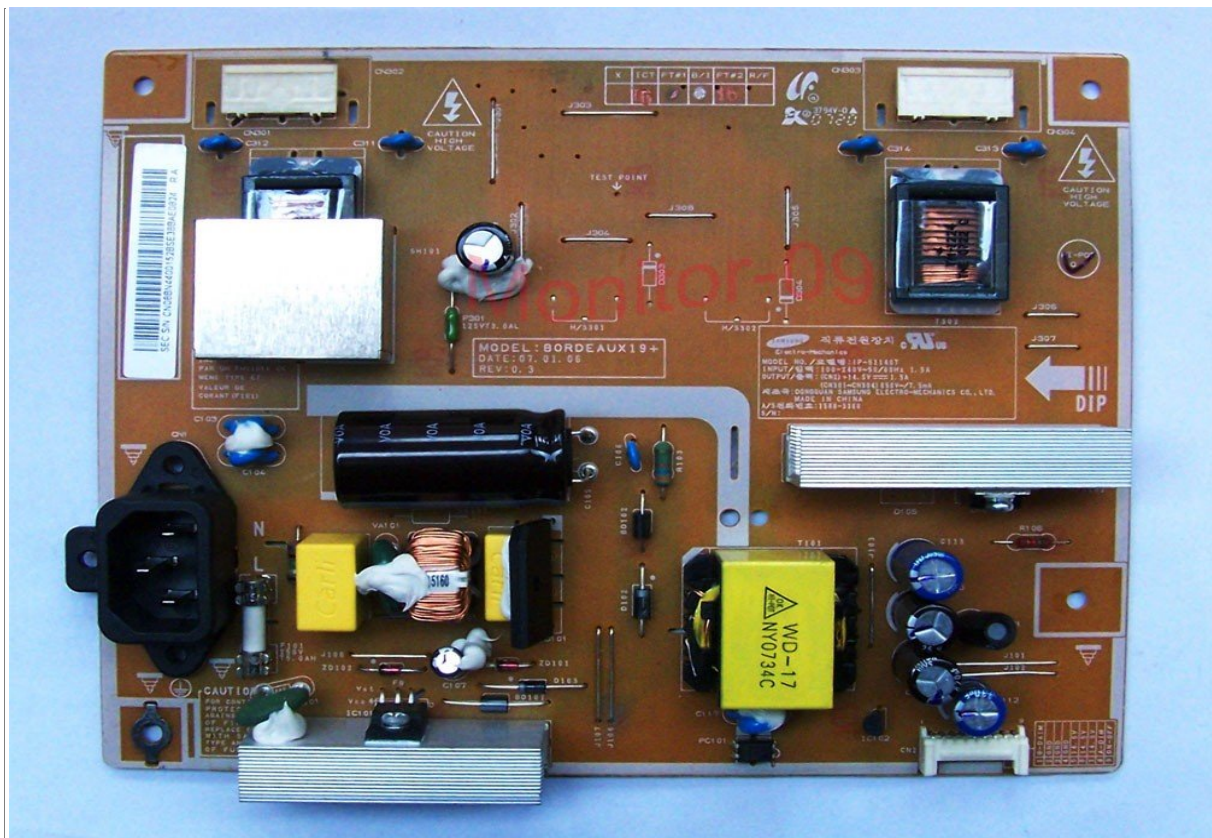


LCD TV Power Supply (IP BOARD) Schematic Diagram & Repair Tips for Sharp LCD TV-Intermittent Sound Problem.

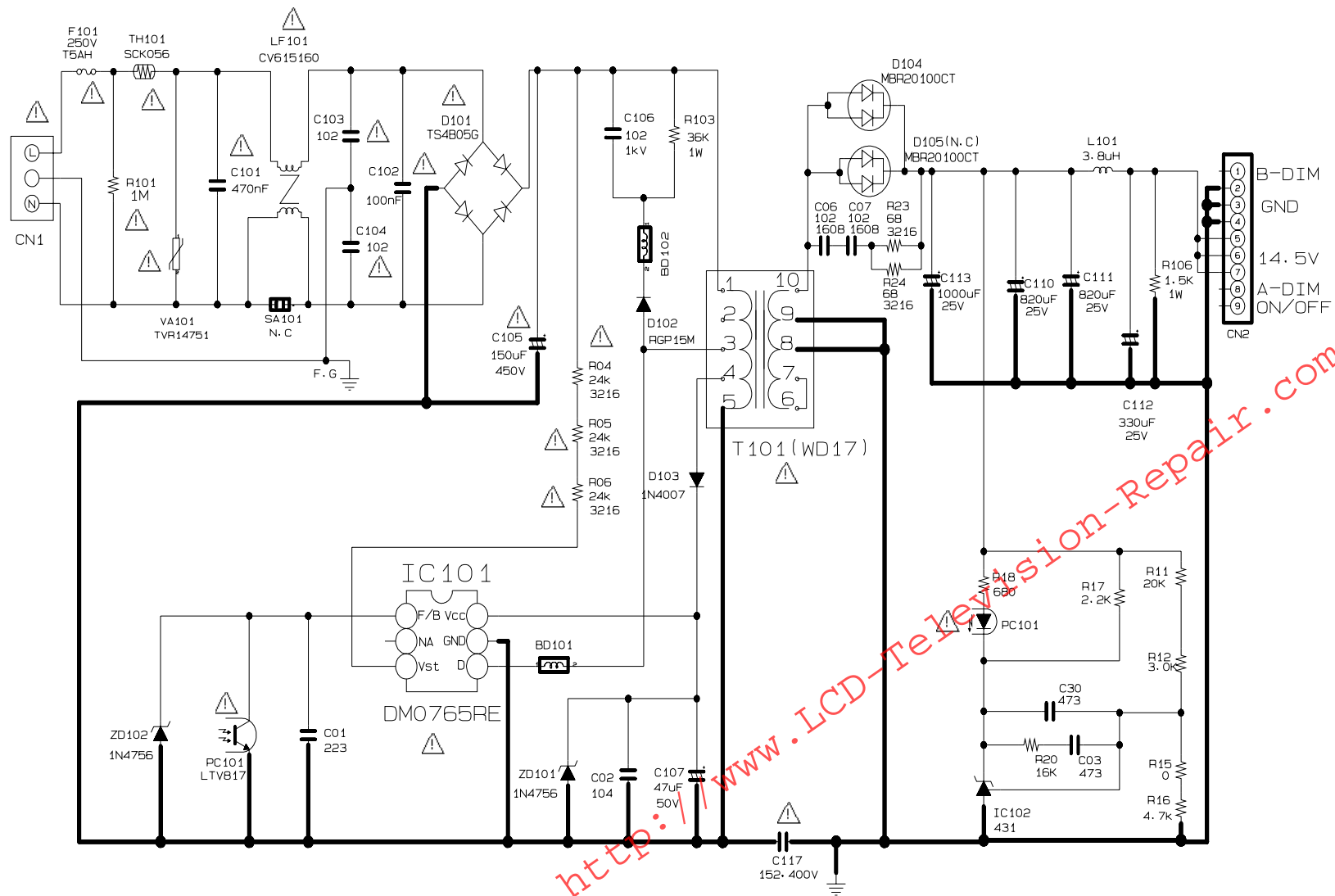
<http://www.LCD-Television-Repair.com>

This is Samsung LCD TV BN44-00152B inverter power supply (IP board) schematic diagram. Where this power supplies are using on Samsung LN-T1953H LCD Tv or other similar LN-T19 series lcd tv. Below is the picture of this PSU:



	SPECIFICATION IP-51140T PSIV510501A	PROJECT CODE DATE OF MAKE DATE OF REFORM	BN44-00152B 2007.01. 08 ---
--	--	---	--

(A) POWER

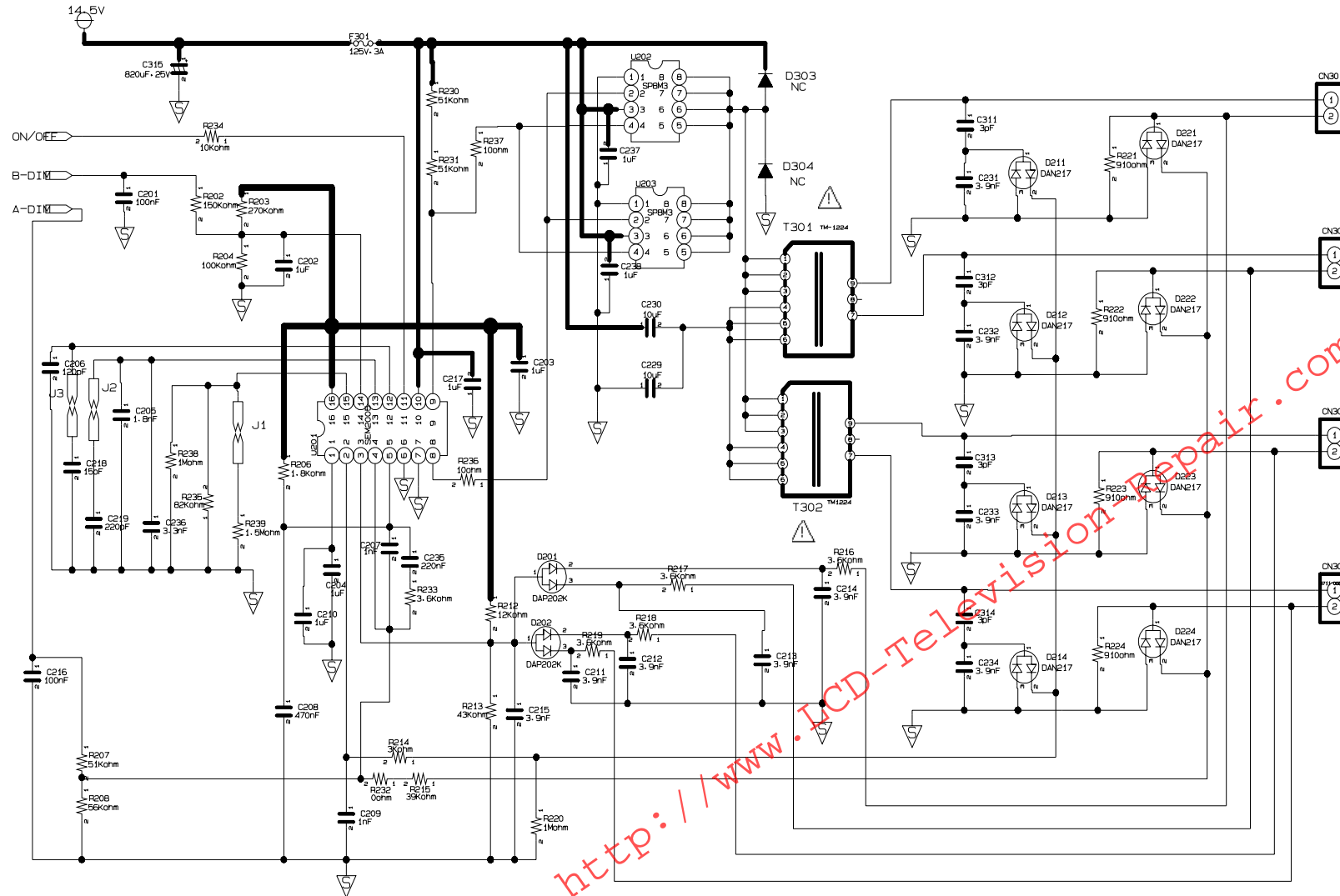


SPECIFICATION
IP-51140T
PSIV510501A

PROJECT CODE
DATE OF MAKE
DATE OF REFORM

BN44-00152B
2007.01. 08

(B) INVERTER



SHARP

Technical Bulletin

LCD TELEVISION

Number: LCDTV-194 A

Date: MARCH, 2009

Models: LC26D4U / LC32D4U / LC37D4U / LC26D6U / LC32D6U / LC37D6U
LC26DA5U / LC32DA5U / LC37DB5U / LC32HT1U

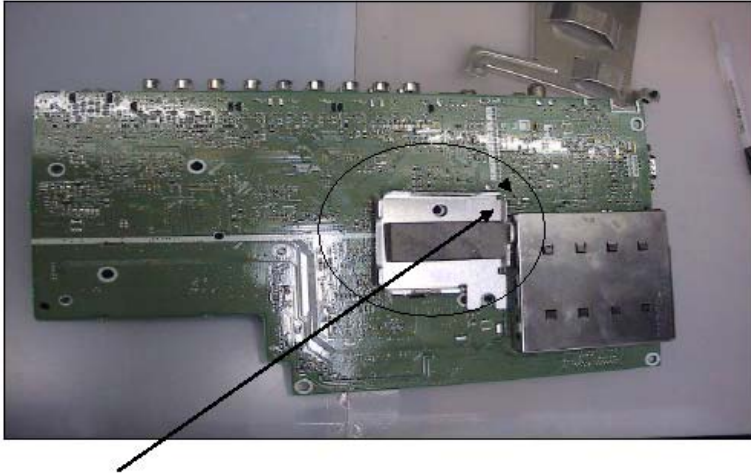
Subject: No audio or intermittent audio

Cause: The insulation pad located on audio output IC2502 breaks down.

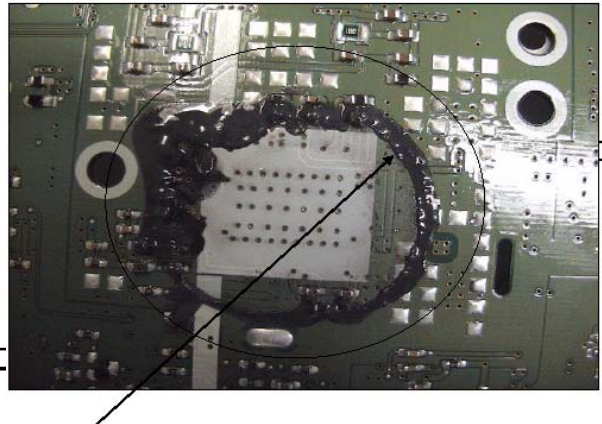
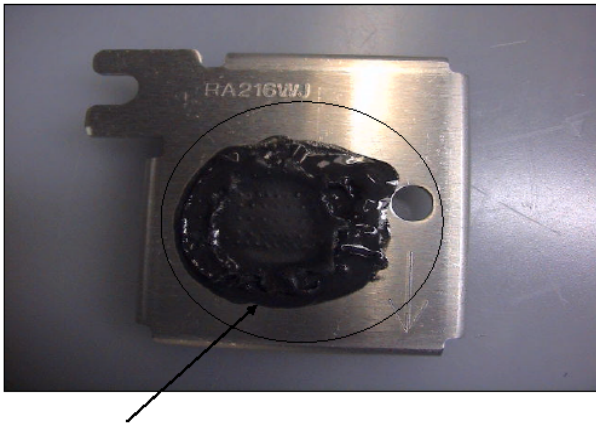
Countermeasure: If the symptom of no audio or intermittent audio is occurring on the above models, please place the insulation pad on the foil side of IC2502 between the PWB and the heat sink. The IC is located on the AV unit.

Please refer to the following pages for the correct installation procedure.

Description	Part number	Price code
Insulation Pad	PSPAZA663WJKZ	AK



1. Remove heat sink of IC 2502 (Audio Amp IC) on the AV unit.



2. There is no need to remove the residue from the old cooling sheet.
3. Place the insulation pad on the heat sink.

*Use part number: **PSPAZA663WJKZ – Insulation Pad***

4. Reattach the heat sink with the new insulation pad to the AV unit.
5. Do not over tighten the screw holding the heat sink to the chassis.

NOTE: If the symptom is not cured after replacing the cooling sheet, please check if the audio amplifier IC2502 (VHITA2024++-1Y) is damaged.

Thank you for your subscription. For more information on what's new update on the members' area, you can refer to the Newsletter site. When you had subscribed to our newsletter list, we will send an email to you once or twice every month and let you know what's latest repair information has been uploaded and what's the free repair information on this month too.

By the way, if you want to become a professional in repairing LCD TV, then you must have the correct repair information, repair tips & etc to improve yourself. And at the same time, you also need to know, where to find the spare parts/components for your replacement. Don't waste your time, most of these information are inside the [LCD TV Repair membership site](#).

Thanks and have a nice day,

Kent

<http://www.LCD-Television-Repair.com>

Feel free to pass this article to your repair friends and colleagues
